

# EN Rapid Web Engineering Process

October 22, 2005 (Draft)

There are two categories of EN Web pages engineering task: Rapid and Rigorous web development.

Rapid web development includes all minor modification and additions to existing PDS and EN web sites. It allows engineers to rapid prototype and test on the web development environment , and then deploy to production web sites a in timely manner. It also gives engineers flexible to CM the changes after deployment to facilitate quick turn around releases.

Rigorous web development includes all major overall web structure modification and additions that have profound affects on future EN web engineering direction, and look and feel for PDS and EN web sites. Rigorous web development will follow the PDS EN Software Engineering Process which is not covered by this document.

This process only covers PDS EN Web pages engineering life cycle for Rapid EN web development which does not require intensive resource, and therefore is not subjected to be initiated via formal EN Change Request.

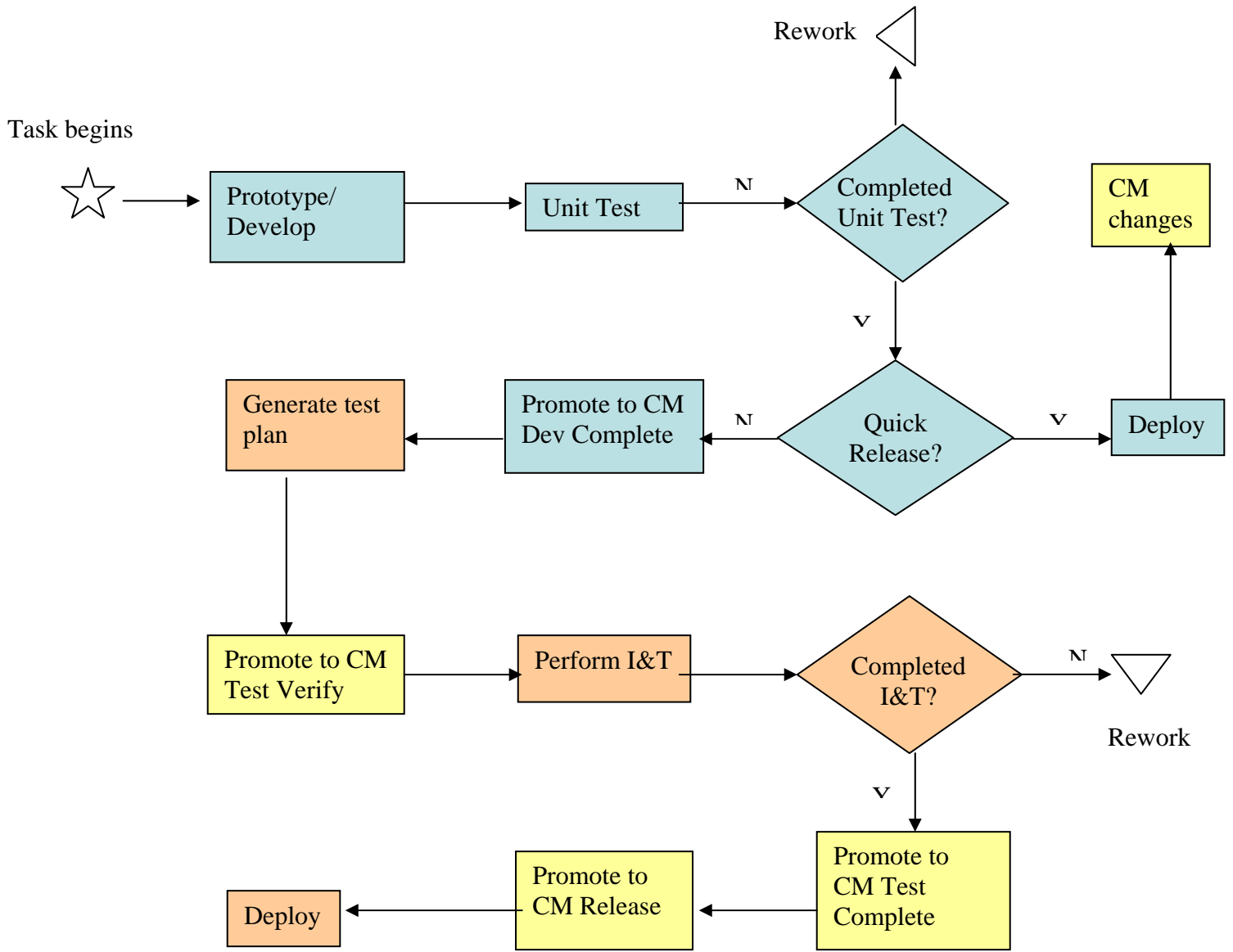
CM – Configuration Management

Ops – Operations

Web-dev – Web development

Responsibilities:

- Web-Dev – design, prototype, code, bug fixes, unit test on starlite, CM source (promote to Dev Complete), generate help page
- CM – Promote source through CM gates: Test Verify, Test Complete and Release



# EN Rapid Web Engineering Process

