

PDS EN Software Engineering Process

Oct 22, 2005 (Draft)

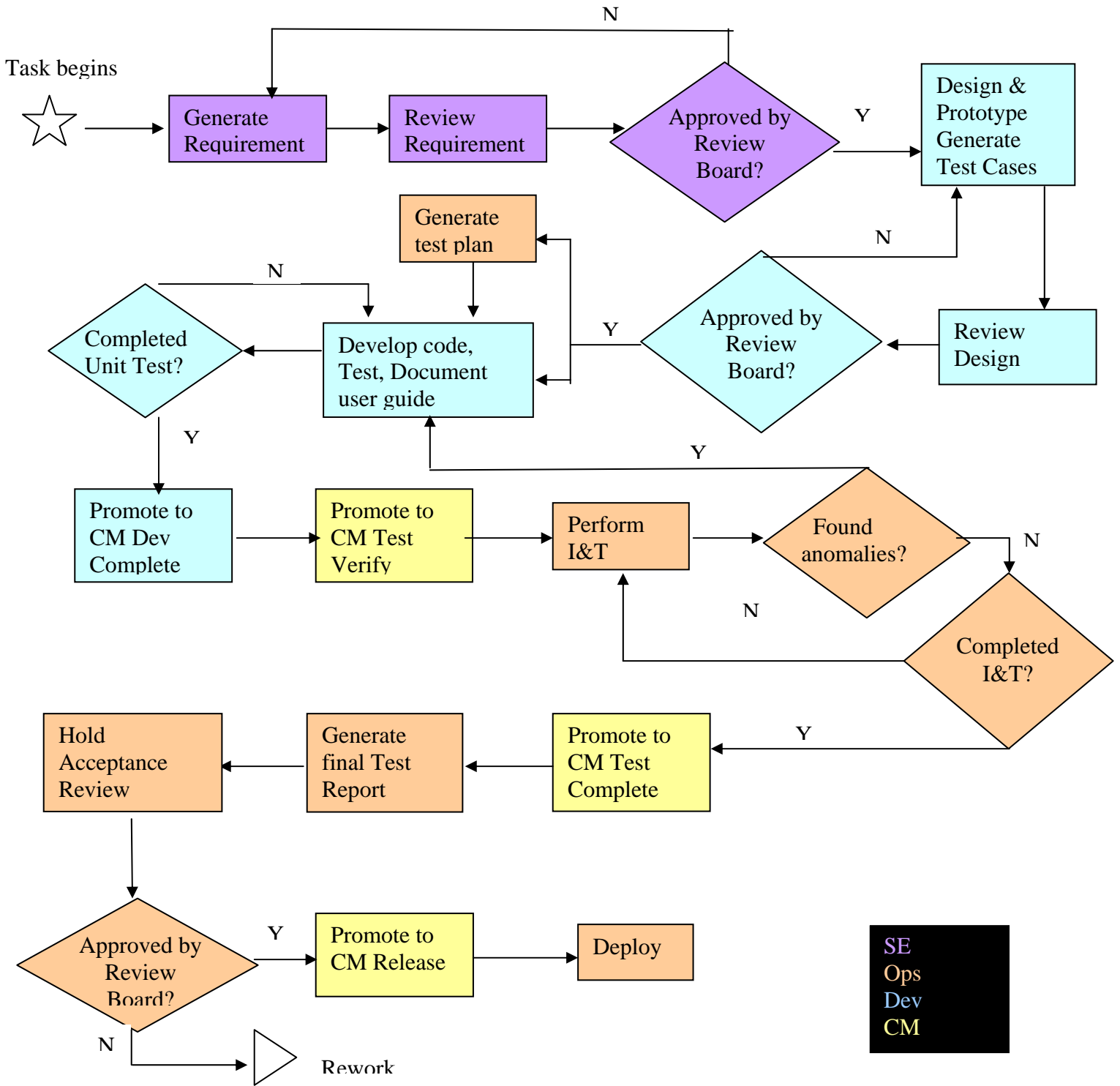
This process covers PDS EN Software development and associated Configuration Management (CM) workflows. EN software development includes system, tools and rigorous web implementation. Currently, there is no independent test environment for software Integration and Test (I&T) for system and tools development, the production environment is used for ultimate validation and deployment. The current CM tool is Harvest CCC. This document describes the proposed process for future software development when a complete test environment is available.

This document does not cover the process which governs formal EN Change Request (see Change Request Process). Nor does it cover rapid web development effort. This process shall be followed when an EN software task is directed by MC and after a task plan is approved.

SE – System Engineering
Dev – Development
CM – Configuration Management
Ops – Operations
MC – Management Council

Responsibilities:

- SE – Generate requirements, Ops concept, help draft user guide, hold requirements review, resolve RFAs, present result to MC
- Dev – design, prototype, code, bug fixes, unit test, submit code to CM and promote to Dev Complete, provide user guide, hold design review, resolve RFAs, present result to MC
- CM – Migrate code to test environment, promote code through Harvest gates: Test Verify, Test Complete and Release
- Ops – Generate test plan (traceable to requirements), test procedures, perform Integration and Test, generate final test report, hold acceptance review, resolve RFAs, present result to MC
- Ops – Open CR, close CR, send release notification, finalize help page



PDS EN Software Engineering Process