

ID	Unique ID	#WBS	Task Name	% Comp	Dur	Start	Finish	Baseline Start	Baseline Finish	2024											
										S	O	N	D	J	F	M	A	M	J	J	A
1	1255	REF	Planetary Data System (PDS)	82%	1620d	Mon 4/1/19	Fri 9/26/25	Fri 3/29/19	Fri 9/26/25	[Gantt bar from 4/1/19 to 9/26/25]											
2	1257	REF	Key Interface Milestones	35%	1493d	Tue 10/1/19	Fri 9/26/25	Tue 10/1/19	Fri 9/26/25	[Gantt bar from 10/1/19 to 9/26/25]											
3	1258	REF	Mission/Project Milestones	35%	1493d	Tue 10/1/19	Fri 9/26/25	Tue 10/1/19	Fri 9/26/25	[Gantt bar from 10/1/19 to 9/26/25]											
4	1433	REF	Data Releases	86%	1243d	Tue 10/1/19	Tue 9/24/24	Tue 10/1/19	Tue 9/24/24	[Gantt bar from 10/1/19 to 9/24/24]											
5	2206	REF	Data Releases Archive	100%	987d	Tue 10/1/19	Fri 9/15/23	Tue 10/1/19	Mon 9/20/21	[Gantt bar from 10/1/19 to 9/15/23]											
151	2638	REF	FY24	50%	247d	Fri 9/29/23	Tue 9/24/24	Fri 9/29/23	Tue 9/24/24	[Gantt bar from 9/29/23 to 9/24/24]											
152	2639	REF	FY24 - Q1 Data Releases	100%	54d	Fri 9/29/23	Fri 12/15/23	Fri 9/29/23	Fri 12/15/23	[Gantt bar from 9/29/23 to 12/15/23]											
153	2643	REF	InSight 18	100%	1d	Fri 9/29/23	Fri 9/29/23	Fri 9/29/23	Fri 9/29/23	[Vertical tick at 9/29/23]											
154	2644	REF	ODY 85	100%	1d	Mon 10/2/23	Mon 10/2/23	Mon 10/2/23	Mon 10/2/23	[Vertical tick at 10/2/23]											
155	2645	REF	MEX 8	100%	1d	Mon 10/2/23	Mon 10/2/23	Mon 10/2/23	Mon 10/2/23	[Vertical tick at 10/2/23]											
156	2646	REF	TGO 9	100%	1d	Mon 10/16/23	Mon 10/16/23	Mon 10/16/23	Mon 10/16/23	[Vertical tick at 10/16/23]											
157	2647	REF	JNO 24	100%	1d	Fri 10/27/23	Fri 10/27/23	Fri 10/27/23	Fri 10/27/23	[Vertical tick at 10/27/23]											
158	2648	REF	MVN 35	100%	1d	Wed 11/15/23	Wed 11/15/23	Wed 11/15/23	Wed 11/15/23	[Vertical tick at 11/15/23]											
159	2649	REF	Perseverance 8	100%	1d	Mon 11/27/23	Mon 11/27/23	Mon 11/27/23	Mon 11/27/23	[Vertical tick at 11/27/23]											
160	2650	REF	MRO 67	100%	1d	Fri 12/1/23	Fri 12/1/23	Fri 12/1/23	Fri 12/1/23	[Vertical tick at 12/1/23]											
161	2651	REF	MSL 34	100%	1d	Tue 11/28/23	Tue 11/28/23	Tue 12/5/23	Tue 12/5/23	[Vertical tick at 11/28/23]											
162	2652	REF	LRO 56	100%	1d	Fri 12/15/23	Fri 12/15/23	Fri 12/15/23	Fri 12/15/23	[Vertical tick at 12/15/23]											
163	2642	REF	FY24 - Q2 Data Releases	82%	50d	Sat 1/20/24	Mon 4/1/24	Tue 1/2/24	Fri 3/29/24	[Gantt bar from 1/20/24 to 3/29/24]											
164	3035	REF	ODY 86	100%	1d	Wed 1/24/24	Wed 1/24/24	Tue 1/2/24	Tue 1/2/24	[Vertical tick at 1/24/24]											
165	3036	REF	ODY RS 226	100%	1d	Sat 1/20/24	Sat 1/20/24	Sat 1/20/24	Sat 1/20/24	[Vertical tick at 1/20/24]											
166	3055	REF	MEX 9	100%	1d	Mon 1/22/24	Mon 1/22/24	Thu 2/1/24	Thu 2/1/24	[Vertical tick at 1/22/24]											
167	3038	REF	JNO 25	100%	1d	Fri 2/2/24	Fri 2/2/24	Fri 2/2/24	Fri 2/2/24	[Vertical tick at 2/2/24]											
168	3039	REF	TGO 10	100%	1d	Thu 2/8/24	Thu 2/8/24	Thu 2/15/24	Thu 2/15/24	[Vertical tick at 2/8/24]											
169	3040	REF	MVN 36	100%	1d	Thu 2/15/24	Thu 2/15/24	Thu 2/15/24	Thu 2/15/24	[Vertical tick at 2/15/24]											
170	3041	REF	MRO 68	100%	1d	Fri 3/1/24	Fri 3/1/24	Fri 3/1/24	Fri 3/1/24	[Vertical tick at 3/1/24]											
171	3042	REF	LRO 57	100%	1d	Fri 3/15/24	Fri 3/15/24	Fri 3/15/24	Fri 3/15/24	[Vertical tick at 3/15/24]											
172	3043	REF	MSL 35	100%	1d	Thu 3/7/24	Thu 3/7/24	Fri 3/15/24	Fri 3/15/24	[Vertical tick at 3/7/24]											
173	3054	REF	ODY RS 227	0%	1d	Mon 4/1/24	Mon 4/1/24	Wed 3/20/24	Wed 3/20/24	[Vertical tick at 4/1/24]											
174	3045	REF	Perseverance 9	0%	1d	Mon 4/1/24	Mon 4/1/24	Fri 3/29/24	Fri 3/29/24	[Vertical tick at 4/1/24]											
175	2641	REF	FY24 - Q3 Data Releases	0%	55d	Mon 4/1/24	Mon 6/17/24	Mon 4/1/24	Mon 6/17/24	[Gantt bar from 4/1/24 to 6/17/24]											
176	3046	REF	ODY 87	0%	1d	Mon 4/1/24	Mon 4/1/24	Mon 4/1/24	Mon 4/1/24	[Vertical tick at 4/1/24]											
177	3047	REF	MVN 37	0%	1d	Wed 5/15/24	Wed 5/15/24	Wed 5/15/24	Wed 5/15/24	[Vertical tick at 5/15/24]											
178	3048	REF	OD RS 228	0%	1d	Mon 5/20/24	Mon 5/20/24	Mon 5/20/24	Mon 5/20/24	[Vertical tick at 5/20/24]											
179	3049	REF	MRO 69	0%	1d	Fri 5/31/24	Fri 5/31/24	Fri 5/31/24	Fri 5/31/24	[Vertical tick at 5/31/24]											
180	3050	REF	MEX 10	0%	1d	Sat 6/1/24	Sat 6/1/24	Sat 6/1/24	Sat 6/1/24	[Vertical tick at 6/1/24]											
181	3051	REF	JNO 26	0%	1d	Tue 6/11/24	Tue 6/11/24	Tue 6/11/24	Tue 6/11/24	[Vertical tick at 6/11/24]											

ID	Unique ID	#WBS	Task Name	% Comp	Dur	Start	Finish	Baseline Start	Baseline Finish	Gantt Chart											
										<div style="display: flex; justify-content: space-between; font-size: 8px;"> S O N D 2024 J F M A M J J A S O N D </div>											
182	3052	REF	LRO 58	0%	1d	Fri 6/14/24	Fri 6/14/24	Fri 6/14/24	Fri 6/14/24												
183	3053	REF	TGO 11	0%	1d	Mon 6/17/24	Mon 6/17/24	Mon 6/17/24	Mon 6/17/24												
184	2640	REF	FY24 - Q4 Data Releases	0%	68d	Tue 6/18/24	Tue 9/24/24	Tue 6/18/24	Tue 9/24/24	-----											
185	3056	REF	ODY 88	0%	1d	Mon 7/1/24	Mon 7/1/24	Mon 7/1/24	Mon 7/1/24												
186	3057	REF	ODY RS 229	0%	1d	Sat 7/20/24	Sat 7/20/24	Sat 7/20/24	Sat 7/20/24												
187	3058	REF	Perseverance 10	0%	1d	Tue 7/30/24	Tue 7/30/24	Tue 7/30/24	Tue 7/30/24												
188	3059	REF	MSL 36	0%	1d	Fri 8/2/24	Fri 8/2/24	Fri 8/2/24	Fri 8/2/24												
189	3060	REF	MVN 38	0%	1d	Thu 8/15/24	Thu 8/15/24	Thu 8/15/24	Thu 8/15/24												
190	3061	REF	MRO 70	0%	1d	Fri 8/30/24	Fri 8/30/24	Fri 8/30/24	Fri 8/30/24												
191	3062	REF	LRO 59	0%	1d	Tue 6/18/24	Tue 6/18/24	Tue 6/18/24	Tue 6/18/24												
192	3063	REF	ODY RS 230	0%	1d	Fri 9/20/24	Fri 9/20/24	Fri 9/20/24	Fri 9/20/24												
193	3064	REF	JNO 27	0%	1d	Tue 9/24/24	Tue 9/24/24	Tue 9/24/24	Tue 9/24/24												
194	3065	REF	FY25	0%	246d	Tue 10/1/24	Fri 9/26/25	Tue 10/1/24	Fri 9/26/25	-----											
195	3066	REF	FY25 - Q1 Data Releases	0%	52d	Tue 10/1/24	Fri 12/13/24	Tue 10/1/24	Fri 12/13/24	-----											
196	3070	REF	MEX 11	0%	1d	Tue 10/1/24	Tue 10/1/24	Tue 10/1/24	Tue 10/1/24												
197	3071	REF	ODY 89	0%	1d	Tue 10/1/24	Tue 10/1/24	Tue 10/1/24	Tue 10/1/24												
198	3072	REF	TGO 12	0%	1d	Tue 10/15/24	Tue 10/15/24	Tue 10/15/24	Tue 10/15/24												
199	3073	REF	MVN 39	0%	1d	Mon 11/11/24	Mon 11/11/24	Mon 11/11/24	Mon 11/11/24												
200	3074	REF	ODY RS 231	0%	1d	Wed 11/20/24	Wed 11/20/24	Wed 11/20/24	Wed 11/20/24												
201	3075	REF	MRO 71	0%	1d	Fri 11/29/24	Fri 11/29/24	Fri 11/29/24	Fri 11/29/24												
202	3076	REF	Perseverance 11	0%	1d	Tue 12/3/24	Tue 12/3/24	Tue 12/3/24	Tue 12/3/24												
203	3077	REF	MSL 37	0%	1d	Fri 12/6/24	Fri 12/6/24	Fri 12/6/24	Fri 12/6/24												
204	3078	REF	LRO 60	0%	1d	Fri 12/13/24	Fri 12/13/24	Fri 12/13/24	Fri 12/13/24												
205	3067	REF	FY25 - Q2 Data Releases	0%	62d	Mon 12/30/24	Fri 3/28/25	Mon 12/30/24	Fri 3/28/25	-----											
206	3079	REF	JNO 28	0%	1d	Mon 12/30/24	Mon 12/30/24	Mon 12/30/24	Mon 12/30/24												
207	3080	REF	FY25 - Q2 Data Releases	0%	62d	Mon 12/30/24	Fri 3/28/25	Mon 12/30/24	Fri 3/28/25	-----											
208	3068	REF	FY25 - Q3 Data Releases	0%	63d	Mon 3/31/25	Fri 6/27/25	Mon 3/31/25	Fri 6/27/25	-----											
209	3069	REF	FY25 - Q4 Data Releases	0%	62d	Mon 6/30/25	Fri 9/26/25	Mon 6/30/25	Fri 9/26/25	-----											
210	1844	REF	PDS-EN TRR/DDR Milestones	0%	1142d	Mon 11/2/20	Fri 6/6/25	Mon 10/26/20	Fri 6/6/25	-----											
211	2259	REF	TRR/DDR Milestones Archive	100%	641d	Mon 11/2/20	Fri 6/2/23	Mon 10/26/20	Mon 5/24/21	◆ 10/2 ◆ 11/20 ◆ 12/7											
226	2973	REF	PDS 14.0 TRR	100%	0d	Mon 10/2/23	Mon 10/2/23	Mon 10/2/23	Mon 10/2/23	◆ 10/2											
227	2974	REF	PDS 14.0 DDR	100%	0d	Mon 11/20/23	Mon 11/20/23	Mon 11/20/23	Mon 11/20/23	◆ 11/20											
228	2975	REF	PDS 14.0 Release to Public	100%	0d	Thu 12/7/23	Thu 12/7/23	Fri 12/1/23	Fri 12/1/23	◆ 12/7											
229	2976	REF	PDS 14.1 TRR	0%	0d	Mon 4/8/24	Mon 4/8/24	Mon 4/8/24	Mon 4/8/24	◆ 4/8											
230	2977	REF	PDS 14.1 DDR	0%	0d	Thu 5/30/24	Thu 5/30/24	Thu 5/30/24	Thu 5/30/24	◆ 5/30											
231	2978	REF	PDS 14.1 Release to Public	0%	0d	Fri 6/7/24	Fri 6/7/24	Fri 6/7/24	Fri 6/7/24	◆ 6/7											

ID	Unique ID	#WBS	Task Name	% Comp	Dur	Start	Finish	Baseline Start	Baseline Finish	2024															
										S	O	N	D	J	F	M	A	M	J	J	A	S	O	N	D
232	2979	REF	PDS 15.0 TRR	0%	0d	Thu 10/3/24	Thu 10/3/24	Thu 10/3/24	Thu 10/3/24	◆ 10/3															
233	2980	REF	PDS 15.0 DDR	0%	0d	Mon 12/2/24	Mon 12/2/24	Mon 12/2/24	Mon 12/2/24	◆ 1															
234	2981	REF	PDS 15.0 Release to Public	0%	0d	Fri 12/6/24	Fri 12/6/24	Fri 12/6/24	Fri 12/6/24	◆ 1															
235	2982	REF	PDS 15.1 TRR	0%	0d	Thu 4/10/25	Thu 4/10/25	Thu 4/10/25	Thu 4/10/25																
236	2983	REF	PDS 15.1 DDR	0%	0d	Mon 6/2/25	Mon 6/2/25	Mon 6/2/25	Mon 6/2/25																
237	2984	REF	PDS 15.1 Release to Public	0%	0d	Fri 6/6/25	Fri 6/6/25	Fri 6/6/25	Fri 6/6/25																
238	1259	REF	Deliveries	84%	1544d	Mon 4/1/19	Fri 6/6/25	Fri 3/29/19	Fri 6/6/25																
239	2207	REF	PDS Deliveries Archive	100%	1043d	Mon 4/1/19	Fri 6/2/23	Fri 3/29/19	Fri 6/11/21																
1256	2500	REF	PDS 14.0	100%	185d	Wed 3/15/23	Thu 12/7/23	Wed 3/15/23	Fri 12/1/23																
1257	2501	REF	PDS 14.0 Planning	100%	46d	Wed 3/15/23	Wed 5/17/23	Wed 3/15/23	Wed 5/17/23																
1260	2703	REF	PDS 14.0 System Engineering	100%	79d	Thu 6/8/23	Mon 10/2/23	Thu 4/6/23	Thu 8/31/23																
1262	2710	C.3.02.2.01.03	PDS 14.0: software-issues-repo #78 - Develop and Attain Approval for ISAs for Node Interfaces	100%	54d	Thu 6/8/23	Fri 8/25/23	Thu 6/8/23	Thu 8/10/23																
1263	2707	C.3.02.2.01.03	PDS 14.0: software-issues-repo #72 - B14.0 Triage Static Code Analysis Reports	100%	18d	Thu 9/7/23	Mon 10/2/23	Thu 8/10/23	Thu 8/31/23																
1265	2504	REF	PDS 14.0 PDS Standards Management	100%	137d	Thu 3/16/23	Fri 9/29/23	Thu 3/16/23	Fri 9/29/23																
1266	2505	REF	PDS 14.0 PDS4 Information Model V1.21.0.0	100%	137d	Thu 3/16/23	Fri 9/29/23	Thu 3/16/23	Fri 9/29/23																
1267	2506	REF	PDS 14.0 Information Model SCRs	100%	73d	Thu 5/11/23	Fri 8/25/23	Thu 4/20/23	Fri 8/4/23																
1270	2509	REF	PDS 14.0 Information Model Release	100%	122d	Thu 3/16/23	Fri 9/8/23	Thu 3/16/23	Fri 9/8/23																
1275	2512	REF	PDS 14.0 Standards Document Updates (Doc Authoring Team)	100%	24d	Mon 8/28/23	Fri 9/29/23	Mon 8/28/23	Fri 9/29/23																
1276	2513	C.3.02.2.01.03	PDS 14.0: Standards Reference Document Update	100%	24d	Mon 8/28/23	Fri 9/29/23	Mon 8/28/23	Fri 9/29/23																
1277	2514	C.3.02.2.01.03	PDS 14.0: Data Providers Handbook Update	100%	24d	Mon 8/28/23	Fri 9/29/23	Mon 8/28/23	Fri 9/29/23																
1278	2515	REF	PDS 14.0 Development & Build	100%	137d	Thu 3/16/23	Fri 9/29/23	Thu 3/16/23	Tue 9/12/23																
1279	2516	REF	PDS 14.0 Production Development & Build	100%	137d	Thu 3/16/23	Fri 9/29/23	Thu 3/16/23	Tue 9/12/23																
1280	2664	REF	PDS 14.0: Data Upload Manager	100%	116d	Fri 3/17/23	Thu 8/31/23	Thu 3/16/23	Thu 8/17/23																
1285	2518	REF	PDS 14.0: Cloud Infusion	100%	92d	Thu 3/16/23	Thu 7/27/23	Thu 3/16/23	Thu 8/3/23																
1290	2519	REF	PDS 14.0: Registry + API Services	100%	102d	Thu 4/6/23	Thu 8/31/23	Thu 4/6/23	Thu 8/31/23																
1299	2517	REF	PDS 14.0: Validate	100%	60d	Tue 4/11/23	Fri 7/7/23	Thu 4/6/23	Thu 7/20/23																
1305	2522	REF	PDS 14.0: Nucleus	100%	47.5d	Thu 4/27/23	Fri 7/7/23	Thu 4/27/23	Thu 8/31/23																
1311	2521	REF	PDS 14.0: Dev Ops	100%	105d	Tue 3/28/23	Fri 8/25/23	Tue 3/28/23	Thu 7/20/23																
1316	2520	REF	PDS 14.0: Web Modernization	100%	113d	Thu 3/16/23	Fri 8/25/23	Thu 3/16/23	Thu 8/31/23																
1322	2523	C.3.03.2.01.03	PDS 14.0: Code Freeze	100%	0d	Thu 8/31/23	Thu 8/31/23	Thu 8/31/23	Thu 8/31/23	8/31															
1323	2524	REF	PDS 14.0 Prep for I&T	100%	25d	Fri 8/25/23	Fri 9/29/23	Wed 8/23/23	Tue 9/12/23																
1324	2525	C.3.03.2.01.03	PDS 14.0: Draft Release Description Document (RDD)	100%	25d	Fri 8/25/23	Fri 9/29/23	Wed 8/23/23	Fri 9/1/23																
1325	2526	C.3.03.2.01.03	PDS 14.0: Final Testing, Build and Deliver to I&T	100%	6d	Tue 9/5/23	Tue 9/12/23	Tue 9/5/23	Tue 9/12/23																

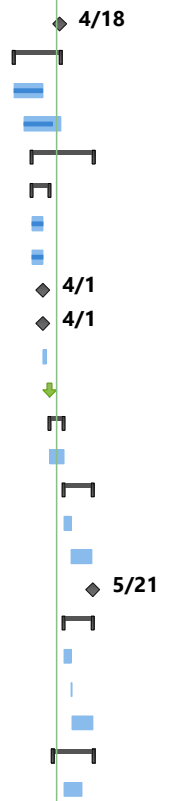
ID	Unique ID	#WBS	Task Name	% Comp	Dur	Start	Finish	Baseline Start	Baseline Finish	2024											
										S	O	N	D	J	F	M	A	M	J	J	A
1326	2527	REF	PDS 14.0 Integration & Test	100%	46d	Wed 9/13/23	Wed 11/15/23	Wed 9/13/23	Tue 11/14/23	[Gantt bar]											
1327	2528	REF	PDS 14.0 Test Readiness Review (TRR)	100%	14d	Wed 9/13/23	Mon 10/2/23	Wed 9/13/23	Mon 10/2/23	[Gantt bar]											
1328	2529	C.3.04.2.01.03	PDS 14.0: Generate & Submit Test Plan for TRR	100%	5d	Wed 9/13/23	Tue 9/19/23	Wed 9/13/23	Tue 9/19/23	[Gantt bar]											
1329	2530	C.3.04.2.01.03	PDS 14.0: Generate & Submit TRR Presentation	100%	5d	Wed 9/13/23	Tue 9/19/23	Wed 9/13/23	Tue 9/19/23	[Gantt bar]											
1330	2531	REF	PDS 14.0: Margin to TRR	100%	5d	Wed 9/20/23	Tue 9/26/23	Wed 9/20/23	Tue 9/26/23	[Gantt bar]											
1331	2532	C.2.16.2.13.05	PDS 14.0: Perform SQA TRR Documentation Review	100%	3d	Wed 9/27/23	Fri 9/29/23	Wed 9/27/23	Fri 9/29/23	[Gantt bar]											
1332	2533	C.3.04.2.01.03	PDS 14.0 TRR	100%	1d	Mon 10/2/23	Mon 10/2/23	Mon 10/2/23	Mon 10/2/23	[Gantt bar]											
1333	2534	REF	PDS 14.0 Information Model Integration & Test	100%	10d	Tue 10/3/23	Mon 10/16/23	Tue 10/3/23	Mon 10/16/23	[Gantt bar]											
1334	2535	C.3.04.2.01.03	PDS 14.0: Perform IM Testing	100%	10d	Tue 10/3/23	Mon 10/16/23	Tue 10/3/23	Mon 10/16/23	[Gantt bar]											
1335	2536	REF	PDS 14.0 dLDD Integration & Test	100%	21d	Tue 10/17/23	Tue 11/14/23	Tue 10/17/23	Tue 11/14/23	[Gantt bar]											
1336	2537	C.3.02.2.01.03	PDS 14.0: Generate and Deliver Discipline LDDs for I&T	100%	5d	Tue 10/17/23	Mon 10/23/23	Tue 10/17/23	Mon 10/23/23	[Gantt bar]											
1337	2538	C.3.04.2.01.03	PDS 14.0: Discipline LDD Review (dLDD Stewards Teams)	100%	15d	Tue 10/24/23	Mon 11/13/23	Tue 10/24/23	Mon 11/13/23	[Gantt bar]											
1338	2539	C.3.02.2.01.03	PDS 14.0: Discipline LDD Freeze	100%	1d	Tue 11/14/23	Tue 11/14/23	Tue 11/14/23	Tue 11/14/23	[Gantt bar]											
1339	2540	REF	PDS 14.0 DN and IPDA Beta Testing	100%	21d	Tue 10/17/23	Tue 11/14/23	Tue 10/17/23	Tue 11/14/23	[Gantt bar]											
1340	2541	C.3.03.2.01.03	PDS 14.0: Prep Beta Testing Package	100%	5d	Tue 10/17/23	Mon 10/23/23	Tue 10/17/23	Mon 10/23/23	[Gantt bar]											
1341	2542	C.3.03.2.01.03	PDS 14.0: Distribute Beta Testing Notification	100%	1d	Tue 10/24/23	Tue 10/24/23	Tue 10/24/23	Tue 10/24/23	[Gantt bar]											
1342	2543	C.3.03.2.01.03	PDS 14.0: DN an IPDA Beta Testing	100%	15d	Wed 10/25/23	Tue 11/14/23	Wed 10/25/23	Tue 11/14/23	[Gantt bar]											
1343	2544	REF	PDS 14.0 System Integration & Test	100%	22d	Tue 10/17/23	Wed 11/15/23	Thu 9/28/23	Thu 11/9/23	[Gantt bar]											
1344	2545	C.3.04.2.01.03	PDS 14.0: Perform System Testing	100%	13d	Tue 10/17/23	Thu 11/2/23	Tue 10/17/23	Thu 11/2/23	[Gantt bar]											
1345	2546	C.3.04.2.01.03	PDS 14.0: Generate Test Report	100%	4d	Fri 11/3/23	Wed 11/8/23	Fri 11/3/23	Wed 11/8/23	[Gantt bar]											
1346	2547	C.3.04.2.01.03	PDS 14.0: Update EN Node webpage with Test Report	100%	1d	Thu 11/9/23	Thu 11/9/23	Thu 11/9/23	Thu 11/9/23	[Gantt bar]											
1347	2548	REF	PDS 14.0 Standards Document Review (Doc Review Team)	100%	13d	Mon 10/30/23	Wed 11/15/23	Thu 9/28/23	Tue 11/7/23	[Gantt bar]											
1348	2549	C.3.04.2.01.03	PDS 14.0: Review Standards Reference Document Updates	100%	5d	Mon 10/30/23	Fri 11/3/23	Thu 9/28/23	Thu 10/26/23	[Gantt bar]											
1349	2550	C.3.04.2.01.03	PDS 14.0: Review Data Providers Handbook Updates	100%	4d	Mon 10/30/23	Thu 11/2/23	Thu 9/28/23	Thu 10/26/23	[Gantt bar]											
1350	2551	C.3.04.2.01.03	PDS 14.0: Complete Doc Updates Per Review Comments	100%	8d	Mon 11/6/23	Wed 11/15/23	Fri 10/27/23	Tue 11/7/23	[Gantt bar]											
1351	2552	REF	PDS 14.0 Release	100%	23d	Fri 11/3/23	Thu 12/7/23	Fri 10/27/23	Fri 12/1/23	[Gantt bar]											
1352	2553	REF	PDS 14.0 Delivery & Deployment Review (DDR)	100%	21d	Fri 11/3/23	Tue 12/5/23	Fri 10/27/23	Thu 11/30/23	[Gantt bar]											
1353	2554	C.3.04.2.01.03	PDS 14.0: Generate Release Description Document (RDD)	100%	5d	Fri 11/3/23	Thu 11/9/23	Fri 10/27/23	Thu 11/2/23	[Gantt bar]											
1354	2555	C.3.04.2.01.03	PDS 14.0: Generate & Submit DDR Presentation	100%	5d	Mon 11/6/23	Fri 11/10/23	Mon 10/30/23	Fri 11/3/23	[Gantt bar]											
1355	2556	REF	PDS 14.0: Margin to DDR	100%	1d	Mon 11/13/23	Mon 11/13/23	Mon 11/13/23	Mon 11/13/23	[Gantt bar]											
1356	2557	C.2.16.2.13.05	PDS 14.0: Perform SQA DDR Documentation Review	100%	3d	Tue 11/14/23	Thu 11/16/23	Tue 11/14/23	Thu 11/16/23	[Gantt bar]											
1357	2558	C.3.04.2.01.03	PDS 14.0 DDR	100%	1d	Mon 11/20/23	Mon 11/20/23	Mon 11/20/23	Mon 11/20/23	[Gantt bar]											
1358	2559	C.3.04.2.01.03	PDS 14.0: Release Test Report	100%	6d	Tue 11/21/23	Thu 11/30/23	Tue 11/21/23	Thu 11/30/23	[Gantt bar]											
1359	2560	C.3.04.2.01.03	PDS 14.0: Release RDD	100%	6d	Tue 11/21/23	Thu 11/30/23	Tue 11/21/23	Thu 11/30/23	[Gantt bar]											
1360	2561	C.3.04.2.01.03	PDS 14.0: Discipline LDD Release	100%	9d	Tue 11/21/23	Tue 12/5/23	Tue 11/21/23	Thu 11/30/23	[Gantt bar]											

ID	Unique ID	#WBS	Task Name	% Comp	Dur	Start	Finish	Baseline Start	Baseline Finish	
1361	2562	REF	PDS 14.0 EN Deployment & Release	100%	11d	Tue 11/21/23	Thu 12/7/23	Tue 11/21/23	Fri 12/1/23	
1362	2563	C.3.04.2.01.03	PDS 14.0: Deployment of Test Environment	100%	4d	Tue 11/21/23	Tue 11/28/23	Tue 11/21/23	Tue 11/28/23	
1363	2564	C.3.04.2.01.03	PDS 14.0: Deployment of Operational Environment	100%	7d	Wed 11/29/23	Thu 12/7/23	Wed 11/29/23	Thu 11/30/23	
1364	2565	C.3.04.2.01.03	PDS 14.0: Webpage Updated	100%	0d	Thu 12/7/23	Thu 12/7/23	Fri 12/1/23	Fri 12/1/23	
1365	2566	C.3.04.2.01.03	PDS 14.0: Released to the Public	100%	0d	Thu 12/7/23	Thu 12/7/23	Fri 12/1/23	Fri 12/1/23	
1366	2715	REF	PDS 14.1	90%	192d	Fri 9/1/23	Fri 6/7/24	Fri 9/1/23	Fri 6/7/24	
1367	2716	REF	PDS 14.1 Planning	100%	28d	Fri 9/1/23	Wed 10/11/23	Mon 9/25/23	Wed 11/8/23	
1368	2717	C.3.01.2.01.01	PDS 14.1: Generate & Submit Release Plan (RP) to SWG	100%	26d	Fri 9/1/23	Mon 10/9/23	Mon 9/25/23	Tue 10/10/23	
1369	2718	C.3.01.2.01.01	PDS 14.1: SWG Review and Approval of RP	100%	2d	Tue 10/10/23	Wed 10/11/23	Wed 10/11/23	Wed 11/8/23	
1370	2719	REF	PDS 14.1 System Engineering	100%	114d	Thu 9/21/23	Thu 3/7/24	Thu 9/21/23	Thu 3/28/24	
1371	2720	C.3.02.2.01.03	PDS 14.1: software-issues-repo #86 - Complete Tasks and Artifacts Supporting NASA A&A Process	100%	114d	Thu 9/21/23	Thu 3/7/24	Thu 9/21/23	Thu 1/25/24	
1372	3030	C.3.02.2.01.03	PDS 14.1: software-issues-repo #67 - Migrate PDS JIRA to Atlassian Cloud JIRA	100%	57d	Thu 10/12/23	Fri 1/5/24	Thu 10/12/23	Thu 1/25/24	
1373	3031	C.3.02.2.01.03	PDS 14.1: software-issues-repo #93 - B14.1 Bi-Annual Triage CodeQL Static Code Analysis Scan Results	100%	11d	Thu 2/15/24	Fri 3/1/24	Thu 1/25/24	Thu 3/7/24	
1374	3032	C.3.02.2.01.03	PDS 14.1: software-issues-repo #94 - B14.1 Prep for I&T	100%	15d	Thu 2/15/24	Thu 3/7/24	Fri 3/8/24	Thu 3/28/24	
1375	2721	REF	PDS 14.1 PDS Standards Management	95%	142d	Mon 9/25/23	Thu 4/18/24	Mon 9/25/23	Mon 3/18/24	
1376	2722	REF	PDS 14.1 PDS4 Information Model V1.22.0.0	95%	142d	Mon 9/25/23	Thu 4/18/24	Mon 9/25/23	Mon 3/18/24	
1377	2723	REF	PDS 14.1 Information Model Implementation	95%	142d	Mon 9/25/23	Thu 4/18/24	Mon 9/25/23	Mon 2/12/24	
1379	3033	C.3.02.2.01.03	PDS 14.1: information-model #703: B14.1 Information Model SCR Implementation*	100%	107d	Mon 9/25/23	Thu 2/29/24	Mon 9/25/23	Mon 2/12/24	
1380	2725	C.3.02.2.01.03	PDS 14.1: information-model #689 Planetary Systems Target Ontology: Rings, Satellites Small Bodies*	100%	112d	Mon 9/25/23	Thu 3/7/24	Mon 2/12/24	Mon 2/12/24	
1381	3034	C.3.02.2.01.03	PDS 14.1: information-model #700: Document Nuances for Reusability of Generic LDD Classes/Attributes	100%	42d	Thu 11/2/23	Fri 1/5/24	Thu 11/2/23	Thu 1/4/24	
1382	2728	C.3.02.2.01.03	PDS 14.1: information-model #713 SCR Freeze	0%	1d	Fri 4/5/24	Fri 4/5/24	Thu 2/29/24	Thu 2/29/24	
1383	2729	C.3.02.2.01.03	PDS 14.1: information-model #704 Delivery IM to I&T and Beta Testing	70%	47d	Tue 2/13/24	Thu 4/18/24	Fri 3/1/24	Thu 3/7/24	
1384	2731	C.3.02.2.01.03	PDS 14.1: information-model #705 Standards Document Updates	95%	38d	Tue 2/13/24	Fri 4/5/24	Tue 2/13/24	Mon 3/18/24	
1385	2733	REF	PDS 14.1 Development & Build	97%	158d	Fri 9/1/23	Fri 4/19/24	Fri 9/1/23	Thu 3/28/24	
1386	2734	REF	PDS 14.1 Production Development & Build	97%	158d	Fri 9/1/23	Fri 4/19/24	Fri 9/1/23	Thu 3/28/24	
1387	2735	REF	PDS 14.1: Data Upload Manager	100%	44d	Thu 10/12/23	Thu 12/14/23	Thu 10/12/23	Thu 3/7/24	
1388	2987	C.3.03.2.01.03	PDS 14.1: data-upload-manager #4 - Develop Cost Model	100%	44d	Thu 10/12/23	Thu 12/14/23	Mon 10/30/23	Thu 3/7/24	
1389	2988	C.3.03.2.01.03	PDS 14.1: data-upload-manager #13 - CSS MVP: Deploy to MCP and Test Uploads to Nucleus	100%	37d	Thu 10/12/23	Tue 12/5/23	Thu 10/12/23	Thu 3/7/24	

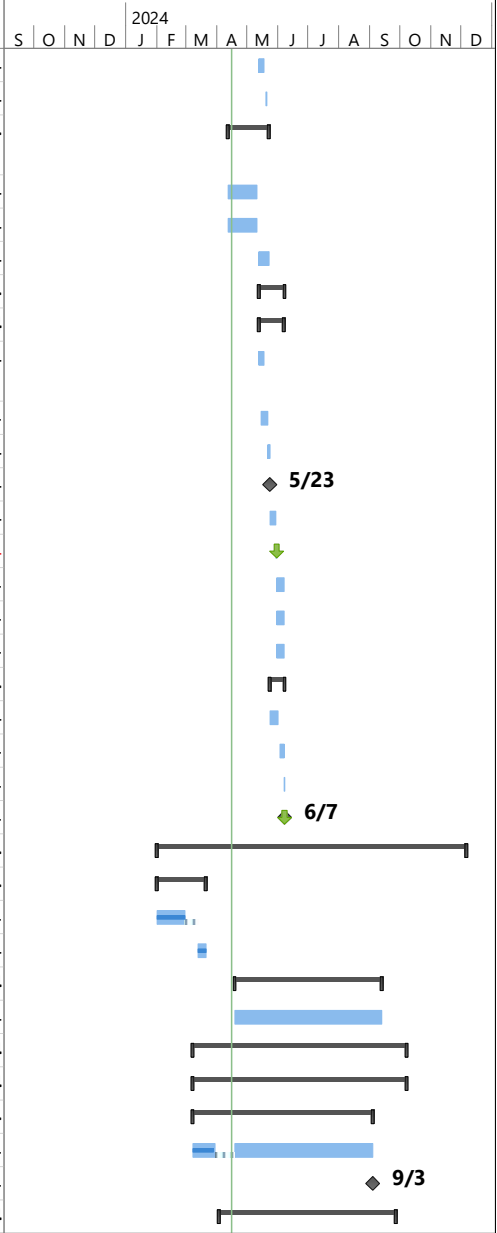


ID	Unique ID	#WBS	Task Name	% Comp	Dur	Start	Finish	Baseline Start	Baseline Finish	2024											
										S	O	N	D	J	F	M	A	M	J	J	A
1391	2736	REF	PDS 14.1: Cloud Infusion	99%	147d	Fri 9/1/23	Thu 4/4/24	Fri 9/1/23	Thu 3/28/24												
1392	2996	C.3.03.2.01.03	PDS 14.1: registry #35 - MCP Pilot: Deploy Registry	100%	72d	Fri 9/1/23	Thu 12/14/23	Fri 9/1/23	Wed 11/22/23												
1393	2989	C.3.03.2.01.03	PDS 14.1: cloud-tasks #71 - CSS MVP: Identify Requirements and Prep for CSS in AWS Open Data Registry	100%	89d	Thu 10/12/23	Thu 2/22/24	Thu 10/12/23	Thu 12/14/23												
1394	2990	C.3.03.2.01.03	PDS 14.1: cloud-tasks #79 - Migrate Existing JPL AWS Infra to MCP	100%	108d	Thu 10/12/23	Wed 3/20/24	Thu 10/12/23	Thu 1/4/24												
1395	2991	C.3.03.2.01.03	PDS 14.1: cloud-tasks #76 - Design and Implement Warm Storage Data Backup Solution	100%	65d	Mon 11/27/23	Fri 3/1/24	Mon 11/27/23	Thu 3/7/24												
1396	2992	C.3.03.2.01.03	PDS 14.1: cloud-tasks #69 - Design and Implement Minor Planet Center Cloud Backup Solution	100%	65d	Mon 11/27/23	Fri 3/1/24	Mon 11/27/23	Thu 1/25/24												
1398	2994	C.3.03.2.01.03	PDS 14.1: cloud-tasks #77 - B14.1 Bi-Annual Cost Model Review	95%	21d	Thu 3/7/24	Thu 4/4/24	Thu 3/7/24	Thu 3/28/24												
1399	2737	REF	PDS 14.1: Registry + API Services	94%	157d	Fri 9/1/23	Thu 4/18/24	Fri 9/1/23	Thu 3/7/24												
1400	2997	C.3.03.2.01.03	PDS 14.1: registry #178 - Improved Fault Tolerance for Registry and Registry API	100%	72d	Fri 9/1/23	Thu 12/14/23	Fri 9/1/23	Thu 1/25/24												
1401	2998	C.3.03.2.01.03	PDS 14.1: registry #185 - Implement Registry Multi-tenancy without Cognito in the loop	83%	157d	Fri 9/1/23	Thu 4/18/24	Fri 9/1/23	Thu 1/25/24												
1402	2999	C.3.03.2.01.03	PDS 14.1: registry #129 - Add Support for LBLX File Extension	100%	42d	Fri 9/1/23	Tue 10/31/23	Fri 9/1/23	Tue 10/31/23												
1403	3001	C.3.03.2.01.03	PDS 14.1: registry #231 - Design and Implement Support for Alternate Data File Paths	100%	41d	Fri 12/15/23	Thu 2/15/24	Wed 11/22/23	Thu 1/25/24												
1404	3002	C.3.03.2.01.03	PDS 14.1: registry #274 - Initialize a Wrapper API Client	100%	66d	Wed 11/22/23	Fri 3/1/24	Wed 11/22/23	Thu 1/25/24												
1409	3082	C.3.03.2.01.03	PDS 14.1: registry-api #389 - Cleanup Code Scanning Issues Identified	100%	34d	Thu 1/25/24	Wed 3/13/24	Thu 1/25/24	Thu 2/15/24												
1410	2738	REF	PDS 14.1: Validate	100%	37d	Thu 10/12/23	Tue 12/5/23	Thu 10/12/23	Thu 12/14/23												
1411	3006	C.3.03.2.01.03	PDS 14.1: validate #695 - Update Validate Test Suite to Support Larger Data Sets	100%	37d	Thu 10/12/23	Tue 12/5/23	Thu 10/12/23	Wed 11/22/23												
1413	2739	REF	PDS 14.1: Nucleus	96%	148d	Fri 9/1/23	Fri 4/5/24	Fri 9/1/23	Thu 1/4/24												
1414	3008	C.3.03.2.01.03	PDS 14.1: nucleus #66 - MCP Pilot: Pilot Nucleus Deployment for CSS and MESSENGER MDIS Data	93%	148d	Fri 9/1/23	Fri 4/5/24	Fri 9/1/23	Wed 11/22/23												
1415	3010	C.3.03.2.01.03	PDS 14.1: nucleus #62 - Develop Support For Off-Nominal Data Loads	100%	42d	Thu 11/2/23	Fri 1/5/24	Thu 11/2/23	Thu 1/4/24												
1416	3009	C.3.03.2.01.03	PDS 14.1: nucleus #17 - CSS MVP: Deploy Baseline Nucleus for Catalina Sky Survey	100%	95d	Thu 10/12/23	Fri 3/1/24	Thu 10/12/23	Thu 1/4/24												
1417	2740	REF	PDS 14.1: Dev Ops	100%	87d	Mon 10/30/23	Thu 3/7/24	Mon 10/30/23	Thu 3/7/24												
1418	3012	C.3.03.2.01.03	PDS 14.1: devops #67 - Develop CI/CD for React Projects	100%	87d	Mon 10/30/23	Thu 3/7/24	Mon 10/30/23	Thu 3/7/24												

ID	Unique ID	#WBS	Task Name	% Comp	Dur	Start	Finish	Baseline Start	Baseline Finish	
1419	3011	C.3.03.2.01.03	OBE: PDS 14.1: devops #37 - Automatically deploy an up to date I&T platform where all software can be tested (Part 2)	100%	30d	Thu 1/25/24	Thu 3/7/24	Fri 11/10/23	Thu 12/14/23	
1424	2742	REF	PDS 14.1: Web Modernization	100%	123d	Fri 9/1/23	Fri 3/1/24	Fri 9/1/23	Thu 3/7/24	
1425	3020	C.3.03.2.01.03	PDS 14.1: web-modernization #44 - Develop Initial Headless Wordpress Docker Deployment	100%	65d	Fri 9/1/23	Tue 12/5/23	Fri 9/1/23	Fri 11/17/23	
1426	3021	C.3.03.2.01.03	PDS 14.1: web-modernization #49 - Implement Header	100%	65d	Fri 9/1/23	Tue 12/5/23	Fri 9/1/23	Wed 11/22/23	
1427	3022	C.3.03.2.01.03	PDS 14.1: web-modernization #61 - Design and Implement Initial Archive Browser Beta	100%	41d	Thu 11/2/23	Thu 1/4/24	Thu 11/2/23	Thu 1/4/24	
1428	3023	C.3.03.2.01.03	PDS 14.1: web-modernization #56 - Implement Initial Investigation Landing Page Template and Associated Components	100%	80d	Thu 11/2/23	Fri 3/1/24	Thu 11/2/23	Thu 1/4/24	
1431	2743	C.3.03.2.01.03	PDS 14.1: Code Freeze	0%	0d	Thu 4/18/24	Thu 4/18/24	Thu 3/7/24	Thu 3/7/24	
1432	2744	REF	PDS 14.1 Prep for I&T	86%	35d	Mon 3/4/24	Fri 4/19/24	Mon 3/4/24	Thu 3/21/24	
1433	2745	C.3.03.2.01.03	PDS 14.1: Draft Release Description Document (RDD)	99%	21d	Mon 3/4/24	Mon 4/1/24	Mon 3/4/24	Wed 3/13/24	
1434	2746	C.3.03.2.01.03	PDS 14.1: Final Testing, Build and Deliver to I&T	75%	27d	Thu 3/14/24	Fri 4/19/24	Thu 3/14/24	Thu 3/21/24	
1435	2747	REF	PDS 14.1 Integration & Test	10%	44d	Fri 3/22/24	Wed 5/22/24	Fri 3/22/24	Wed 5/22/24	
1436	2748	REF	PDS 14.1 Test Readiness Review (TRR)	77%	12d	Fri 3/22/24	Mon 4/8/24	Fri 3/22/24	Mon 4/8/24	
1437	2749	C.3.04.2.01.03	PDS 14.1: Generate & Submit Test Plan for TRR	99%	7d	Fri 3/22/24	Mon 4/1/24	Fri 3/22/24	Thu 3/28/24	
1438	2750	C.3.04.2.01.03	PDS 14.1: Generate & Submit TRR Presentation	99%	7d	Fri 3/22/24	Mon 4/1/24	Fri 3/22/24	Thu 3/28/24	
1439	2751	REF	PDS 14.1: Margin to TRR	0%	0d	Mon 4/1/24	Mon 4/1/24	Fri 3/29/24	Mon 4/1/24	
1440	2752	C.3.04.2.01.03	PDS 14.1: TRR Documentation Freeze	0%	0d	Mon 4/1/24	Mon 4/1/24	Mon 4/1/24	Mon 4/1/24	
1441	2753	C.2.13.2.01.05	PDS 14.1: Perform SQA TRR Documentation Review	0%	3d	Tue 4/2/24	Thu 4/4/24	Tue 4/2/24	Thu 4/4/24	
1442	2754	C.3.04.2.01.03	PDS 14.1 TRR	0%	1d	Mon 4/8/24	Mon 4/8/24	Mon 4/8/24	Mon 4/8/24	
1443	2755	REF	PDS 14.1 Information Model Integration & Test	0%	10d	Tue 4/9/24	Mon 4/22/24	Tue 4/9/24	Mon 4/22/24	
1444	2756	C.3.04.2.01.03	PDS 14.1: Perform IM Testing	0%	10d	Tue 4/9/24	Mon 4/22/24	Tue 4/9/24	Mon 4/22/24	
1445	2757	REF	PDS 14.1 dLDD Integration & Test	0%	21d	Tue 4/23/24	Tue 5/21/24	Tue 4/23/24	Tue 5/21/24	
1446	2758	C.3.02.2.01.03	PDS 14.1: Generate and Deliver Discipline LDDs for I&T	0%	5d	Tue 4/23/24	Mon 4/29/24	Tue 4/23/24	Mon 4/29/24	
1447	2759	C.3.04.2.01.03	PDS 14.1: Discipline LDD Review (dLDD Stewards Teams)	0%	15d	Tue 4/30/24	Mon 5/20/24	Tue 4/30/24	Mon 5/20/24	
1448	2760	C.3.02.2.01.03	PDS 14.1: Discipline LDD Freeze	0%	1d	Tue 5/21/24	Tue 5/21/24	Tue 5/21/24	Tue 5/21/24	
1449	2761	REF	PDS 14.1 DN and IPDA Beta Testing	0%	21d	Tue 4/23/24	Tue 5/21/24	Tue 4/23/24	Tue 5/21/24	
1450	2762	C.3.03.2.01.03	PDS 14.1: Prep Beta Testing Package	0%	5d	Tue 4/23/24	Mon 4/29/24	Tue 4/23/24	Mon 4/29/24	
1451	2763	C.3.03.2.01.03	PDS 14.1: Distribute Beta Testing Notification	0%	1d	Tue 4/30/24	Tue 4/30/24	Tue 4/30/24	Tue 4/30/24	
1452	2764	C.3.03.2.01.03	PDS 14.1: DN an IPDA Beta Testing	0%	15d	Wed 5/1/24	Tue 5/21/24	Wed 5/1/24	Tue 5/21/24	
1453	2765	REF	PDS 14.1 System Integration & Test	0%	29d	Fri 4/12/24	Wed 5/22/24	Fri 4/12/24	Wed 5/22/24	
1454	2766	C.3.04.2.01.03	PDS 14.1: Perform System Testing	0%	14d	Tue 4/23/24	Fri 5/10/24	Tue 4/23/24	Fri 5/10/24	



ID	Unique ID	#WBS	Task Name	% Comp	Dur	Start	Finish	Baseline Start	Baseline Finish	
1455	2767	C.3.04.2.01.03	PDS 14.1: Generate Test Report	0%	5d	Mon 5/13/24	Fri 5/17/24	Mon 5/13/24	Fri 5/17/24	
1456	2768	C.3.04.2.01.03	PDS 14.1: Update EN Node webpage with Test Report	0%	1d	Mon 5/20/24	Mon 5/20/24	Mon 5/20/24	Mon 5/20/24	
1457	2769	REF	PDS 14.1 Standards Document Review (Doc Review Team)	0%	29d	Fri 4/12/24	Wed 5/22/24	Fri 4/12/24	Wed 5/22/24	
1458	2770	C.3.04.2.01.03	PDS 14.1: Review Standards Reference Document Updates	0%	21d	Fri 4/12/24	Fri 5/10/24	Fri 4/12/24	Fri 5/10/24	
1459	2771	C.3.04.2.01.03	PDS 14.1: Review Data Providers Handbook Updates	0%	21d	Fri 4/12/24	Fri 5/10/24	Fri 4/12/24	Fri 5/10/24	
1460	2772	C.3.04.2.01.03	PDS 14.1: Complete Doc Updates Per Review Comments	0%	8d	Mon 5/13/24	Wed 5/22/24	Mon 5/13/24	Wed 5/22/24	
1461	2773	REF	PDS 14.1 Release	0%	19d	Mon 5/13/24	Fri 6/7/24	Mon 5/13/24	Fri 6/7/24	
1462	2774	REF	PDS 14.1 Delivery & Deployment Review (DDR)	0%	18d	Mon 5/13/24	Thu 6/6/24	Mon 5/13/24	Thu 6/6/24	
1463	2775	C.3.04.2.01.03	PDS 14.1: Generate Release Description Document (RDD)	0%	5d	Mon 5/13/24	Fri 5/17/24	Mon 5/13/24	Fri 5/17/24	
1464	2776	C.3.04.2.01.03	PDS 14.1: Generate & Submit DDR Presentation	0%	5d	Wed 5/15/24	Tue 5/21/24	Wed 5/15/24	Tue 5/21/24	
1465	2777	REF	PDS 14.1: Margin to DDR	0%	2d	Wed 5/22/24	Thu 5/23/24	Wed 5/22/24	Thu 5/23/24	
1466	2778	C.3.04.2.01.03	PDS 14.1: DDR Documentation Freeze	0%	0d	Thu 5/23/24	Thu 5/23/24	Thu 5/23/24	Thu 5/23/24	◆ 5/23
1467	2779	C.2.13.2.01.05	PDS 14.1: Perform SQA DDR Documentation Review	0%	3d	Fri 5/24/24	Wed 5/29/24	Fri 5/24/24	Wed 5/29/24	
1468	2780	C.3.04.2.01.03	PDS 14.1 DDR	0%	1d	Thu 5/30/24	Thu 5/30/24	Thu 5/30/24	Thu 5/30/24	↓
1469	2781	C.3.04.2.01.03	PDS 14.1: Release Test Report	0%	5d	Fri 5/31/24	Thu 6/6/24	Fri 5/31/24	Thu 6/6/24	
1470	2782	C.3.04.2.01.03	PDS 14.1: Release RDD	0%	5d	Fri 5/31/24	Thu 6/6/24	Fri 5/31/24	Thu 6/6/24	
1471	2783	C.3.04.2.01.03	PDS 14.1: Discipline LDD Release	0%	5d	Fri 5/31/24	Thu 6/6/24	Fri 5/31/24	Thu 6/6/24	
1472	2784	REF	PDS 14.1 EN Deployment & Release	0%	10d	Fri 5/24/24	Fri 6/7/24	Fri 5/24/24	Fri 6/7/24	
1473	2785	C.3.04.2.01.03	PDS 14.1: Deployment of Test Environment	0%	5d	Fri 5/24/24	Fri 5/31/24	Fri 5/24/24	Fri 5/31/24	
1474	2786	C.3.04.2.01.03	PDS 14.1: Deployment of Operational Environment	0%	4d	Mon 6/3/24	Thu 6/6/24	Mon 6/3/24	Thu 6/6/24	
1475	2787	C.3.04.2.01.03	PDS 14.1: Webpage Updated	0%	1d	Fri 6/7/24	Fri 6/7/24	Fri 6/7/24	Fri 6/7/24	
1476	2788	C.3.04.2.01.03	PDS 14.1: Released to the Public	0%	0d	Fri 6/7/24	Fri 6/7/24	Fri 6/7/24	Fri 6/7/24	◆ 6/7
1477	2789	REF	PDS 15.0	3%	215d	Thu 2/1/24	Fri 12/6/24	Wed 2/14/24	Fri 12/6/24	
1478	2790	REF	PDS 15.0 Planning	100%	34d	Thu 2/1/24	Wed 3/20/24	Wed 2/14/24	Wed 4/10/24	
1479	2791	C.3.01.2.01.01	PDS 15.0: Generate & Submit Release Plan (RP) to SWG	100%	28d	Thu 2/1/24	Tue 3/12/24	Wed 2/14/24	Tue 3/12/24	
1480	2792	C.3.01.2.01.01	PDS 15.0: SWG Review and Approval of RP	100%	6d	Wed 3/13/24	Wed 3/20/24	Wed 3/13/24	Wed 4/10/24	
1481	2793	REF	PDS 15.0 System Engineering	0%	101d	Fri 4/19/24	Thu 9/12/24	Fri 3/8/24	Thu 9/12/24	
1482	2794	C.3.02.2.01.03	PDS 15.0: System Engineering RLIs	0%	101d	Fri 4/19/24	Thu 9/12/24	Fri 3/8/24	Thu 9/12/24	
1483	2795	REF	PDS 15.0 PDS Standards Management	5%	148d	Fri 3/8/24	Mon 10/7/24	Fri 3/8/24	Thu 9/26/24	
1484	2796	REF	PDS 15.0 PDS4 Information Model V1.23.0.0	5%	148d	Fri 3/8/24	Mon 10/7/24	Fri 3/8/24	Thu 9/26/24	
1485	2797	REF	PDS 15.0 Information Model SCRs	13%	124d	Fri 3/8/24	Tue 9/3/24	Fri 3/8/24	Tue 8/13/24	
1486	2798	C.3.02.2.01.03	PDS 15.0: Process Information Model SCRs (LOE)	13%	124d	Fri 3/8/24	Tue 9/3/24	Fri 3/8/24	Tue 8/13/24	
1487	2799	C.3.02.2.01.03	PDS 15.0: All SCRs to be implemented have been identified	0%	0d	Tue 9/3/24	Tue 9/3/24	Tue 8/13/24	Tue 8/13/24	◆ 9/3
1488	2800	REF	PDS 15.0 Information Model Release	0%	123d	Wed 4/3/24	Thu 9/26/24	Fri 3/22/24	Thu 9/26/24	



ID	Unique ID	#WBS	Task Name	% Comp	Dur	Start	Finish	Baseline Start	Baseline Finish	
1489	2801	C.3.02.2.01.03	PDS 15.0: LDDTool/IMTool Code Refactoring	0%	118d	Wed 4/3/24	Thu 9/19/24	Fri 3/22/24	Thu 9/19/24	
1490	2802	C.3.02.2.01.03	PDS 15.0: SCR Implementations Complete	0%	0d	Thu 9/19/24	Thu 9/19/24	Thu 9/19/24	Thu 9/19/24	◆ 9/19
1491	2803	C.3.02.2.01.03	PDS 15.0: Delivery IM to I&T and Beta Testing	0%	5d	Fri 9/20/24	Thu 9/26/24	Fri 9/20/24	Thu 9/26/24	
1492	2804	REF	PDS 15.0 Standards Document Updates (Doc Authoring Team)	0%	24d	Wed 9/4/24	Mon 10/7/24	Wed 8/14/24	Tue 9/17/24	┌
1493	2805	C.3.02.2.01.03	PDS 15.0: Standards Reference Document Update	0%	24d	Wed 9/4/24	Mon 10/7/24	Wed 8/14/24	Tue 9/17/24	▬
1494	2806	C.3.02.2.01.03	PDS 15.0: Data Providers Handbook Update	0%	24d	Wed 9/4/24	Mon 10/7/24	Wed 8/14/24	Tue 9/17/24	▬
1495	2807	REF	PDS 15.0 Development & Build	0%	125d	Mon 4/1/24	Thu 9/26/24	Fri 3/8/24	Thu 10/3/24	┌
1496	2808	REF	PDS 15.0 Production Development & Build	0%	125d	Mon 4/1/24	Thu 9/26/24	Fri 3/8/24	Thu 10/3/24	┌
1497	2809	REF	PDS 15.0: Data Upload Manager	0%	115d	Mon 4/1/24	Thu 9/12/24	Tue 4/9/24	Thu 5/30/24	▬
1500	2810	REF	PDS 15.0: Cloud Infusion	0%	115d	Mon 4/1/24	Thu 9/12/24	Thu 3/28/24	Thu 10/3/24	▬
1510	2811	C.3.03.2.01.03	PDS 15.0: Registry + API Services	0%	115d	Mon 4/1/24	Thu 9/12/24	Fri 3/8/24	Thu 9/12/24	▬
1511	2812	C.3.03.2.01.03	PDS 15.0: Validate	0%	115d	Mon 4/1/24	Thu 9/12/24	Fri 3/8/24	Thu 9/12/24	▬
1512	2813	C.3.03.2.01.03	PDS 15.0: Nucleus	0%	115d	Mon 4/1/24	Thu 9/12/24	Fri 3/8/24	Thu 9/12/24	▬
1513	2814	C.3.03.2.01.03	PDS 15.0: Dev Ops	0%	115d	Mon 4/1/24	Thu 9/12/24	Fri 3/8/24	Thu 9/12/24	▬
1514	2815	C.3.03.2.01.03	PDS 15.0: DOI Service	0%	115d	Mon 4/1/24	Thu 9/12/24	Fri 3/8/24	Thu 9/12/24	▬
1515	2816	C.3.03.2.01.03	PDS 15.0: Web Modernization	0%	115d	Mon 4/1/24	Thu 9/12/24	Fri 3/8/24	Thu 9/12/24	▬
1516	2817	C.3.03.2.01.03	PDS 15.0: Code Freeze	0%	0d	Thu 9/12/24	Thu 9/12/24	Thu 9/12/24	Thu 9/12/24	◆ 9/12
1517	2818	REF	PDS 15.0 Prep for I&T	0%	14d	Mon 9/9/24	Thu 9/26/24	Mon 9/9/24	Thu 9/26/24	┌
1518	2819	C.3.03.2.01.03	PDS 15.0: Draft Release Description Document (RDD)	0%	8d	Mon 9/9/24	Wed 9/18/24	Mon 9/9/24	Wed 9/18/24	
1519	2820	C.3.03.2.01.03	PDS 15.0: Final Testing, Build and Deliver to I&T	0%	6d	Thu 9/19/24	Thu 9/26/24	Thu 9/19/24	Thu 9/26/24	
1520	2821	REF	PDS 15.0 Integration & Test	0%	41d	Mon 9/23/24	Mon 11/18/24	Mon 9/23/24	Mon 11/18/24	┌
1521	2822	REF	PDS 15.0 Test Readiness Review (TRR)	0%	9d	Mon 9/23/24	Thu 10/3/24	Mon 9/23/24	Thu 10/3/24	┌
1522	2823	C.3.04.2.01.03	PDS 15.0: Generate & Submit Test Plan for TRR	0%	5d	Mon 9/23/24	Fri 9/27/24	Mon 9/23/24	Fri 9/27/24	
1523	2824	C.3.04.2.01.03	PDS 15.0: Generate & Submit TRR Presentation	0%	5d	Mon 9/23/24	Fri 9/27/24	Mon 9/23/24	Fri 9/27/24	
1524	2825	REF	PDS 15.0: Margin to TRR	0%	0d	Fri 9/27/24	Fri 9/27/24	Fri 9/27/24	Fri 9/27/24	◆ 9/27
1525	2826	C.3.04.2.01.03	PDS 15.0: TRR Documentation Freeze	0%	0d	Fri 9/27/24	Fri 9/27/24	Fri 9/27/24	Fri 9/27/24	◆ 9/27
1526	2827	C.2.13.2.01.05	PDS 15.0: Perform SQA TRR Documentation Review	0%	3d	Mon 9/30/24	Wed 10/2/24	Mon 9/30/24	Wed 10/2/24	
1527	2828	C.3.04.2.01.03	PDS 15.0 TRR	0%	1d	Thu 10/3/24	Thu 10/3/24	Thu 10/3/24	Thu 10/3/24	↓
1528	2829	REF	PDS 15.0 Information Model Integration & Test	0%	10d	Fri 10/4/24	Thu 10/17/24	Fri 10/4/24	Thu 10/17/24	┌
1529	2830	C.3.04.2.01.03	PDS 15.0: Perform IM Testing	0%	10d	Fri 10/4/24	Thu 10/17/24	Fri 10/4/24	Thu 10/17/24	
1530	2831	REF	PDS 15.0 dLDD Integration & Test	0%	21d	Fri 10/18/24	Fri 11/15/24	Fri 10/18/24	Fri 11/15/24	┌
1531	2832	C.3.02.2.01.03	PDS 15.0: Generate and Deliver Discipline LDDs for I&T	0%	5d	Fri 10/18/24	Thu 10/24/24	Fri 10/18/24	Thu 10/24/24	



ID	Unique ID	#WBS	Task Name	% Comp	Dur	Start	Finish	Baseline Start	Baseline Finish	2024																	
										S	O	N	D	J	F	M	A	M	J	J	A	S	O	N	D		
1563	2864	REF	PDS 15.1 Planning	0%	49d	Fri 9/6/24	Wed 11/13/24	Fri 9/6/24	Wed 11/13/24																		
1564	2865	C.3.01.2.01.01	PDS 15.1: Generate & Submit Release Plan (RP) to SWG	0%	23d	Fri 9/6/24	Tue 10/8/24	Fri 9/6/24	Tue 10/8/24																		
1565	2866	C.3.01.2.01.01	PDS 15.1: SWG Review and Approval of RP	0%	26d	Wed 10/9/24	Wed 11/13/24	Wed 10/9/24	Wed 11/13/24																		
1566	2867	REF	PDS 15.1 System Engineering	0%	128d	Thu 9/19/24	Thu 3/27/25	Thu 9/19/24	Thu 3/27/25																		
1567	2868	C.3.02.2.01.03	PDS 15.1: System Engineering RLI	0%	128d	Thu 9/19/24	Thu 3/27/25	Thu 9/19/24	Thu 3/27/25																		
1568	2869	REF	PDS 15.1 PDS Standards Management	0%	137d	Fri 9/13/24	Thu 4/3/25	Fri 9/13/24	Thu 4/3/25																		
1569	2870	REF	PDS 15.1 PDS4 Information Model V1.23.0.0	0%	137d	Fri 9/13/24	Thu 4/3/25	Fri 9/13/24	Thu 4/3/25																		
1570	2871	REF	PDS 15.1 Information Model SCRs	0%	110d	Fri 9/13/24	Tue 2/25/25	Fri 9/13/24	Tue 2/25/25																		
1571	2872	C.3.02.2.01.03	PDS 15.1: Process Information Model SCRs (LOE)	0%	110d	Fri 9/13/24	Tue 2/25/25	Fri 9/13/24	Tue 2/25/25																		
1572	2873	C.3.02.2.01.03	PDS 15.1: All SCRS to be implemented have been identified	0%	0d	Tue 2/25/25	Tue 2/25/25	Tue 2/25/25	Tue 2/25/25																		
1573	2874	REF	PDS 15.1 Information Model Release	0%	128d	Thu 9/26/24	Thu 4/3/25	Thu 9/26/24	Thu 4/3/25																		
1574	2875	C.3.02.2.01.03	PDS 15.1: LDDTool/IMTool Code Refactoring	0%	123d	Thu 9/26/24	Thu 3/27/25	Thu 9/26/24	Thu 3/27/25																		
1575	2876	C.3.02.2.01.03	PDS 15.1: SCR Implementations Complete	0%	0d	Thu 3/27/25	Thu 3/27/25	Thu 3/27/25	Thu 3/27/25																		
1576	2877	C.3.02.2.01.03	PDS 15.1: Delivery IM to I&T and Beta Testing	0%	5d	Fri 3/28/25	Thu 4/3/25	Fri 3/28/25	Thu 4/3/25																		
1577	2878	REF	PDS 15.1 Standards Document Updates (Doc Authoring Team)	0%	24d	Wed 2/26/25	Mon 3/31/25	Wed 2/26/25	Mon 3/31/25																		
1578	2879	C.3.02.2.01.03	PDS 15.1: Standards Reference Document Update	0%	24d	Wed 2/26/25	Mon 3/31/25	Wed 2/26/25	Mon 3/31/25																		
1579	2880	C.3.02.2.01.03	PDS 15.1: Data Providers Handbook Update	0%	24d	Wed 2/26/25	Mon 3/31/25	Wed 2/26/25	Mon 3/31/25																		
1580	2881	REF	PDS 15.1 Development & Build	0%	137d	Fri 9/13/24	Thu 4/3/25	Fri 9/13/24	Thu 4/3/25																		
1581	2882	REF	PDS 15.1 Production Development & Build	0%	137d	Fri 9/13/24	Thu 4/3/25	Fri 9/13/24	Thu 4/3/25																		
1582	2883	C.3.03.2.01.03	PDS 15.1: Data Upload Manager	0%	128d	Fri 9/13/24	Fri 3/21/25	Fri 9/13/24	Fri 3/21/25																		
1583	2884	C.3.03.2.01.03	PDS 15.1: Cloud Infusion	0%	128d	Fri 9/13/24	Fri 3/21/25	Fri 9/13/24	Fri 3/21/25																		
1584	2885	C.3.03.2.01.03	PDS 15.1: Registry + API Services	0%	128d	Fri 9/13/24	Fri 3/21/25	Fri 9/13/24	Fri 3/21/25																		
1585	2886	C.3.03.2.01.03	PDS 15.1: Validate	0%	128d	Fri 9/13/24	Fri 3/21/25	Fri 9/13/24	Fri 3/21/25																		
1586	2887	C.3.03.2.01.03	PDS 15.1: Nucleus	0%	128d	Fri 9/13/24	Fri 3/21/25	Fri 9/13/24	Fri 3/21/25																		
1587	2888	C.3.03.2.01.03	PDS 15.1: Dev Ops	0%	128d	Fri 9/13/24	Fri 3/21/25	Fri 9/13/24	Fri 3/21/25																		
1588	2889	C.3.03.2.01.03	PDS 15.1: DOI Service	0%	128d	Fri 9/13/24	Fri 3/21/25	Fri 9/13/24	Fri 3/21/25																		
1589	2890	C.3.03.2.01.03	PDS 15.1: Web Modernization	0%	128d	Fri 9/13/24	Fri 3/21/25	Fri 9/13/24	Fri 3/21/25																		
1590	2891	C.3.03.2.01.03	PDS 15.1: Code Freeze	0%	0d	Fri 3/21/25	Fri 3/21/25	Fri 3/21/25	Fri 3/21/25																		
1591	2892	REF	PDS 15.1 Prep for I&T	0%	14d	Mon 3/17/25	Thu 4/3/25	Mon 3/17/25	Thu 4/3/25																		
1592	2893	C.3.03.2.01.03	PDS 15.1: Draft Release Description Document (RDD)	0%	8d	Mon 3/17/25	Wed 3/26/25	Mon 3/17/25	Wed 3/26/25																		
1593	2894	C.3.03.2.01.03	PDS 15.1: Final Testing, Build and Deliver to I&T	0%	6d	Thu 3/27/25	Thu 4/3/25	Thu 3/27/25	Thu 4/3/25																		
1594	2895	REF	PDS 15.1 Integration & Test	0%	41d	Mon 3/31/25	Tue 5/27/25	Mon 3/31/25	Tue 5/27/25																		
1595	2896	REF	PDS 15.1 Test Readiness Review (TRR)	0%	9d	Mon 3/31/25	Thu 4/10/25	Mon 3/31/25	Thu 4/10/25																		
1596	2897	C.3.04.2.01.03	PDS 15.1: Generate & Submit Test Plan for TRR	0%	5d	Mon 3/31/25	Fri 4/4/25	Mon 3/31/25	Fri 4/4/25																		
1597	2898	C.3.04.2.01.03	PDS 15.1: Generate & Submit TRR Presentation	0%	5d	Mon 3/31/25	Fri 4/4/25	Mon 3/31/25	Fri 4/4/25																		

ID	Unique ID	#WBS	Task Name	% Comp	Dur	Start	Finish	Baseline Start	Baseline Finish																				
										S	O	N	D	2024				J	F	M	A	M	J	J	A	S	O	N	D
1598	2899	REF	PDS 15.1: Margin to TRR	0%	0d	Fri 4/4/25	Fri 4/4/25	Fri 4/4/25	Fri 4/4/25																				
1599	2900	C.3.04.2.01.03	PDS 15.1: TRR Documentation Freeze	0%	0d	Fri 4/4/25	Fri 4/4/25	Fri 4/4/25	Fri 4/4/25																				
1600	2901	C.2.13.2.01.05	PDS 15.1: Perform SQA TRR Documentation Review	0%	3d	Mon 4/7/25	Wed 4/9/25	Mon 4/7/25	Wed 4/9/25																				
1601	2902	C.3.04.2.01.03	PDS 15.1 TRR	0%	1d	Thu 4/10/25	Thu 4/10/25	Thu 4/10/25	Thu 4/10/25																				
1602	2903	REF	PDS 15.1 Information Model Integration & Test	0%	10d	Fri 4/11/25	Thu 4/24/25	Fri 4/11/25	Thu 4/24/25																				
1603	2904	C.3.04.2.01.03	PDS 15.1: Perform IM Testing	0%	10d	Fri 4/11/25	Thu 4/24/25	Fri 4/11/25	Thu 4/24/25																				
1604	2905	REF	PDS 15.1 dLDD Integration & Test	0%	21d	Fri 4/25/25	Fri 5/23/25	Fri 4/25/25	Fri 5/23/25																				
1605	2906	C.3.02.2.01.03	PDS 15.1: Generate and Deliver Discipline LDDs for I&T	0%	5d	Fri 4/25/25	Thu 5/1/25	Fri 4/25/25	Thu 5/1/25																				
1606	2907	C.3.04.2.01.03	PDS 15.1: Discipline LDD Review (dLDD Stewards Teams)	0%	15d	Fri 5/2/25	Thu 5/22/25	Fri 5/2/25	Thu 5/22/25																				
1607	2908	C.3.02.2.01.03	PDS 15.1: Discipline LDD Freeze	0%	1d	Fri 5/23/25	Fri 5/23/25	Fri 5/23/25	Fri 5/23/25																				
1608	2909	REF	PDS 15.1 DN and IPDA Beta Testing	0%	21d	Fri 4/25/25	Fri 5/23/25	Fri 4/25/25	Fri 5/23/25																				
1609	2910	C.3.03.2.01.03	PDS 15.1: Prep Beta Testing Package	0%	5d	Fri 4/25/25	Thu 5/1/25	Fri 4/25/25	Thu 5/1/25																				
1610	2911	C.3.03.2.01.03	PDS 15.1: Distribute Beta Testing Notification	0%	1d	Fri 5/2/25	Fri 5/2/25	Fri 5/2/25	Fri 5/2/25																				
1611	2912	C.3.03.2.01.03	PDS 15.1: DN an IPDA Beta Testing	0%	15d	Mon 5/5/25	Fri 5/23/25	Mon 5/5/25	Fri 5/23/25																				
1612	2913	REF	PDS 15.1 System Integration & Test	0%	29d	Wed 4/16/25	Tue 5/27/25	Wed 4/16/25	Tue 5/27/25																				
1613	2914	C.3.04.2.01.03	PDS 15.1: Perform System Testing	0%	14d	Fri 4/25/25	Wed 5/14/25	Fri 4/25/25	Wed 5/14/25																				
1614	2915	C.3.04.2.01.03	PDS 15.1: Generate Test Report	0%	4d	Thu 5/15/25	Tue 5/20/25	Thu 5/15/25	Tue 5/20/25																				
1615	2916	C.3.04.2.01.03	PDS 15.1: Update EN Node webpage with Test Report	0%	1d	Wed 5/21/25	Wed 5/21/25	Wed 5/21/25	Wed 5/21/25																				
1616	2917	REF	PDS 15.1 Standards Document Review (Doc Review Team)	0%	29d	Wed 4/16/25	Tue 5/27/25	Wed 4/16/25	Tue 5/27/25																				
1617	2918	C.3.04.2.01.03	PDS 15.1: Review Standards Reference Document Updates	0%	21d	Wed 4/16/25	Wed 5/14/25	Wed 4/16/25	Wed 5/14/25																				
1618	2919	C.3.04.2.01.03	PDS 15.1: Review Data Providers Handbook Updates	0%	21d	Wed 4/16/25	Wed 5/14/25	Wed 4/16/25	Wed 5/14/25																				
1619	2920	C.3.04.2.01.03	PDS 15.1: Complete Doc Updates Per Review Comments	0%	8d	Thu 5/15/25	Tue 5/27/25	Thu 5/15/25	Tue 5/27/25																				
1620	2921	REF	PDS 15.1 Release	0%	16d	Thu 5/15/25	Fri 6/6/25	Thu 5/15/25	Fri 6/6/25																				
1621	2922	REF	PDS 15.1 Delivery & Deployment Review (DDR)	0%	16d	Thu 5/15/25	Fri 6/6/25	Thu 5/15/25	Fri 6/6/25																				
1622	2923	C.3.04.2.01.03	PDS 15.1: Generate Release Description Document (RDD)	0%	5d	Thu 5/15/25	Wed 5/21/25	Thu 5/15/25	Wed 5/21/25																				
1623	2924	C.3.04.2.01.03	PDS 15.1: Generate & Submit DDR Presentation	0%	5d	Fri 5/16/25	Thu 5/22/25	Fri 5/16/25	Thu 5/22/25																				
1624	2925	REF	PDS 15.1: Margin to DDR	0%	0d	Fri 5/23/25	Fri 5/23/25	Fri 5/23/25	Fri 5/23/25																				
1625	2926	C.3.04.2.01.03	PDS 15.1: DDR Documentation Freeze	0%	0d	Fri 5/23/25	Fri 5/23/25	Fri 5/23/25	Fri 5/23/25																				
1626	2927	C.2.13.2.01.05	PDS 15.1: Perform SQA DDR Documentation Review	0%	3d	Tue 5/27/25	Thu 5/29/25	Tue 5/27/25	Thu 5/29/25																				
1627	2928	C.3.04.2.01.03	PDS 15.1 DDR	0%	1d	Mon 6/2/25	Mon 6/2/25	Mon 6/2/25	Mon 6/2/25																				
1628	2929	C.3.04.2.01.03	PDS 15.1: Release Test Report	0%	4d	Tue 6/3/25	Fri 6/6/25	Tue 6/3/25	Fri 6/6/25																				
1629	2930	C.3.04.2.01.03	PDS 15.1: Release RDD	0%	4d	Tue 6/3/25	Fri 6/6/25	Tue 6/3/25	Fri 6/6/25																				
1630	2931	C.3.04.2.01.03	PDS 15.1: Discipline LDD Release	0%	4d	Tue 6/3/25	Fri 6/6/25	Tue 6/3/25	Fri 6/6/25																				
1631	2932	REF	PDS 15.1 EN Deployment & Release	0%	9d	Tue 5/27/25	Fri 6/6/25	Tue 5/27/25	Fri 6/6/25																				
1632	2933	C.3.04.2.01.03	PDS 15.1: Deployment of Test Environment	0%	4d	Tue 5/27/25	Fri 5/30/25	Tue 5/27/25	Fri 5/30/25																				

ID	Unique ID	#WBS	Task Name	% Comp	Dur	Start	Finish	Baseline Start	Baseline Finish	2024														
										S	O	N	D	J	F	M	A	M	J	J	A	S	O	N
1633	2934	C.3.04.2.01.03	PDS 15.1: Deployment of Operational Environment	0%	2d	Mon 6/2/25	Tue 6/3/25	Mon 6/2/25	Tue 6/3/25															
1634	2935	C.3.04.2.01.03	PDS 15.1: Webpage Updated	0%	1d	Wed 6/4/25	Wed 6/4/25	Wed 6/4/25	Wed 6/4/25															
1635	2936	C.3.04.2.01.03	PDS 15.1: Released to the Public	0%	0d	Fri 6/6/25	Fri 6/6/25	Fri 6/6/25	Fri 6/6/25															
1636	2567	REF	PDS-EN Support	65%	502d	Mon 9/26/22	Fri 9/27/24	Mon 9/26/22	Fri 9/27/24															
1637	2568	REF	PDS Management Archive	100%	247d	Mon 9/26/22	Thu 9/21/23	Mon 9/26/22	Thu 9/21/23															
1659	2938	REF	PDS-EN Management	40%	254d	Mon 9/25/23	Fri 9/27/24	Mon 9/25/23	Fri 9/27/24															
1660	2939	REF	PDS-EN PPBE-26 (Not Part of AMMOS PPBE)	86%	30d	Thu 2/29/24	Wed 4/10/24	Tue 1/9/24	Wed 3/13/24															
1661	2940	REF	<i>PDS-EN PPBE-26-PBM: Kickoff PPBE-26 - Guidelines Distributed</i>	100%	1d	Thu 2/29/24	Thu 2/29/24	Tue 1/9/24	Tue 1/9/24															
1662	2941	REF	PDS-EN PPBE-26 2nd Pass	100%	19d	Fri 3/1/24	Wed 3/27/24	Wed 1/10/24	Thu 2/29/24															
1663	2942	REF	<i>PDS-EN PPBE-26-PRA: Prepare & Distribute 1st Pass Draft IBTs to AEMs/CAMs</i>	100%	5d	Fri 3/1/24	Thu 3/7/24	Wed 1/10/24	Wed 2/7/24															
1664	2943	C.3.01.2.01.01	PDS-EN PPBE-26: 2nd Pass - AEMs work with PRAs to revise IBTs w/BOEs for changes	100%	12d	Mon 3/11/24	Tue 3/26/24	Thu 2/8/24	Wed 2/28/24															
1665	2944	REF	<i>PDS-EN PPBE-26-PBM: 2nd Pass Changes Approved/Disapproved by PM</i>	100%	1d	Wed 3/27/24	Wed 3/27/24	Thu 2/29/24	Thu 2/29/24															
1666	2945	REF	PDS-EN PPBE-26 3rd Pass	71%	10d	Thu 3/28/24	Wed 4/10/24	Fri 3/1/24	Wed 3/13/24															
1667	2946	REF	<i>PDS-EN PPBE-26-PRA: Finalize & Distribute 2nd Pass Final IBTs to AEMs/CAMs with notes on any additional required revisions</i>	75%	8d	Thu 3/28/24	Tue 4/9/24	Fri 3/1/24	Tue 3/5/24															
1668	2947	C.3.01.2.01.01	PDS-EN PPBE-26: 3rd Pass - AEMs work with PRAs to revise IBTs as required	75%	9d	Thu 3/28/24	Tue 4/9/24	Wed 3/6/24	Tue 3/12/24															
1669	2948	REF	<i>PDS-EN PPBE-26-PBM: 3rd Pass - Changes Approved/Disapproved by PM</i>	0%	1d	Wed 4/10/24	Wed 4/10/24	Wed 3/13/24	Wed 3/13/24															
1670	2949	REF	PDS-EN Mid-Year EAC Replan	0%	19d	Tue 4/2/24	Fri 4/26/24	Tue 3/5/24	Fri 4/26/24															
1671	2950	REF	<i>PDS-EN FY25 EAC-PBM: Kickoff Mid-Year EAC Replan - Guidelines Distributed</i>	0%	1d	Tue 4/2/24	Tue 4/2/24	Tue 3/5/24	Tue 3/5/24															
1673	2952	C.3.01.2.01.01	PDS-EN FY25 EAC: AEMs/Mgrs/CAMs Generate Mid-Year EAC (based on ME MAR Actuals) with PRAs & Verify Alignment w/the Schedule	0%	14d	Wed 4/3/24	Mon 4/22/24	Thu 4/4/24	Tue 4/23/24															
1674	2953	REF	<i>PDS-EN FY25 EAC-PBM: Obtains PM Approval of Mid-Year EACs</i>	0%	2d	Tue 4/23/24	Wed 4/24/24	Tue 4/23/24	Wed 4/24/24															
1675	2954	REF	<i>PDS-EN FY25 EAC-PRA: Incorporate Mid-Year EAC Changes</i>	0%	2d	Thu 4/25/24	Fri 4/26/24	Thu 4/25/24	Fri 4/26/24															
1676	2955	REF	PDS-EN FY25 WA Cycle	0%	58d	Tue 7/9/24	Fri 9/27/24	Tue 7/9/24	Fri 9/27/24															
1677	2956	REF	<i>PDS-EN FY25 WA-PBM: Kickoff FY25 WA Cycle - Distribute WA Guidelines</i>	0%	1d	Tue 7/9/24	Tue 7/9/24	Tue 7/9/24	Tue 7/9/24															
1678	2957	REF	<i>PDS-EN FY25 WA-PSA: FY25 Schedule Templates Distributed to AEMs</i>	0%	1d	Wed 7/10/24	Wed 7/10/24	Wed 7/10/24	Wed 7/10/24															
1679	2958	C.3.01.2.01.01	PDS-EN FY25 WA: AEMs/CAMs Generate & Submit High Fidelity FY25 Schedules Utilizing Templates to PSAs	0%	17d	Thu 7/11/24	Fri 8/2/24	Thu 7/11/24	Fri 8/2/24															

ID	Unique ID	#WBS	Task Name	% Comp	Dur	Start	Finish	Baseline Start	Baseline Finish	2024																		
										S	O	N	D	J	F	M	A	M	J	J	A	S	O	N	D			
1680	2959	REF	<i>PDS-EN FY25 WA-PSA: Incorporate AEM/Mgr/CAM Schedule Inputs & Resolve any Disconnects</i>	0%	9d	Mon 8/5/24	Fri 8/16/24	Mon 8/5/24	Fri 8/16/24																			
1681	2960	REF	<i>PDS-EN FY25 WA-PRA: Generate WA Templates and Verify IBTs ready for AEM/Manager/CAM input in WA tool</i>	0%	7d	Tue 7/16/24	Wed 7/24/24	Tue 7/16/24	Wed 7/24/24																			
1682	2961	C.3.01.2.01.01	PDS-EN FY25 WA: AEMs/Mgrs/CAMs Review & Update FY25 WAs (includes adding necessary attachments)	0%	36d	Thu 7/25/24	Fri 9/13/24	Thu 7/25/24	Fri 9/13/24																			
1683	2962	C.3.01.2.01.01	PDS-EN FY25 WA: AEMs/Mgrs/CAMs Work with PRAs to Update IBTs for Phasing Changes	0%	29d	Mon 8/5/24	Fri 9/13/24	Mon 8/5/24	Fri 9/13/24																			
1684	2963	REF	<i>PDS-EN FY25 WA: Bus Team Performs Cost/Schedule Reconciliation & works with AEMs/Mgrs/CAMs to Resolve Disconnects</i>	0%	14d	Mon 8/12/24	Fri 8/30/24	Mon 8/12/24	Fri 8/30/24																			
1685	2964	C.3.01.2.01.01	PDS-EN FY25 WA: AEMs/Mgrs FY25 High Fidelity Schedule Review w/l	0%	4d	Mon 8/19/24	Thu 8/22/24	Mon 8/19/24	Thu 8/22/24																			
1686	2965	C.3.01.2.01.01	PDS-EN FY25 WA: CAMs Submit FY25 WAs that Don't Require Schedules (e.g. LOE WAs) for Approval	0%	25d	Thu 8/1/24	Thu 9/5/24	Thu 8/1/24	Thu 9/5/24																			
1687	2966	REF	<i>PDS-EN FY25 WA-PSA: Finalize WA Schedules in MS Project (Includes Final Cost/Schedule Analysis)</i>	0%	5d	Mon 8/26/24	Fri 8/30/24	Mon 8/26/24	Fri 8/30/24																			
1688	2967	REF	<i>PDS-EN FY25 WA-PSA: Generate & Submit FY25 WA Schedules (PDF) to AEMs/Mgrs/CAMs</i>	0%	3d	Tue 9/3/24	Thu 9/5/24	Tue 9/3/24	Thu 9/5/24																			
1689	2968	C.3.01.2.01.01	PDS-EN FY25 WA: CAMs Submit FY25 WAs that Require Schedules for Approval	0%	10d	Fri 8/30/24	Fri 9/13/24	Fri 8/30/24	Fri 9/13/24																			
1690	2969	REF	<i>PDS-EN FY25 WA-PM: Work Agreements Approved</i>	0%	1d	Fri 9/27/24	Fri 9/27/24	Fri 9/27/24	Fri 9/27/24																			
1691	2970	C.3.01.2.01.01	PDS-EN Resolution of MGSSAITS	50%	254d	Mon 9/25/23	Fri 9/27/24	Mon 9/25/23	Fri 9/27/24																			
1692	2971	C.3.01.2.01.01	PDS-EN Provide Management Support	50%	254d	Mon 9/25/23	Fri 9/27/24	Mon 9/25/23	Fri 9/27/24																			